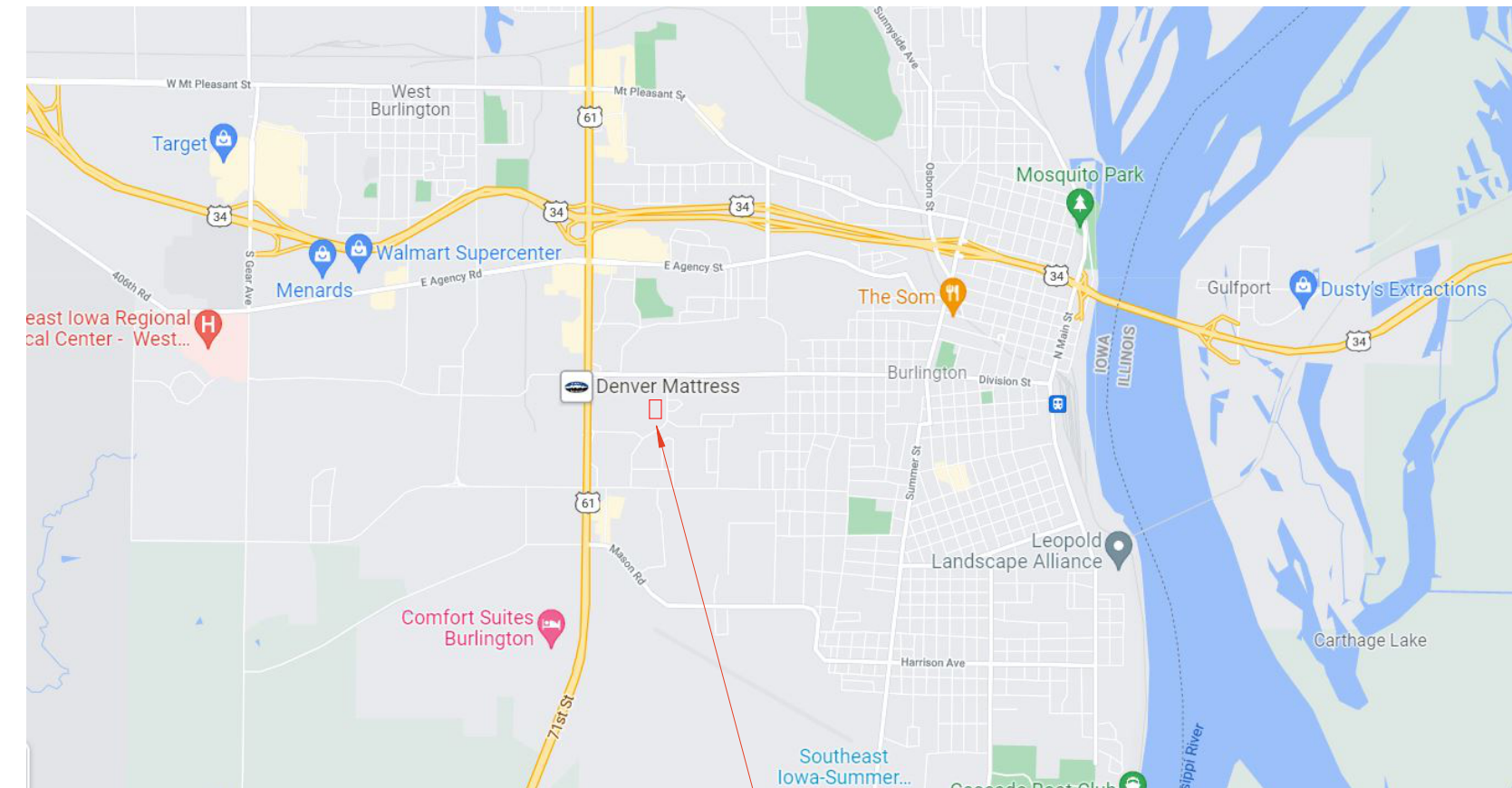




RENOVATIONS TO BURLINGTON HIGH SCHOOL

Burlington Community School District
421 Terrace Dr, Burlington, IA 52601

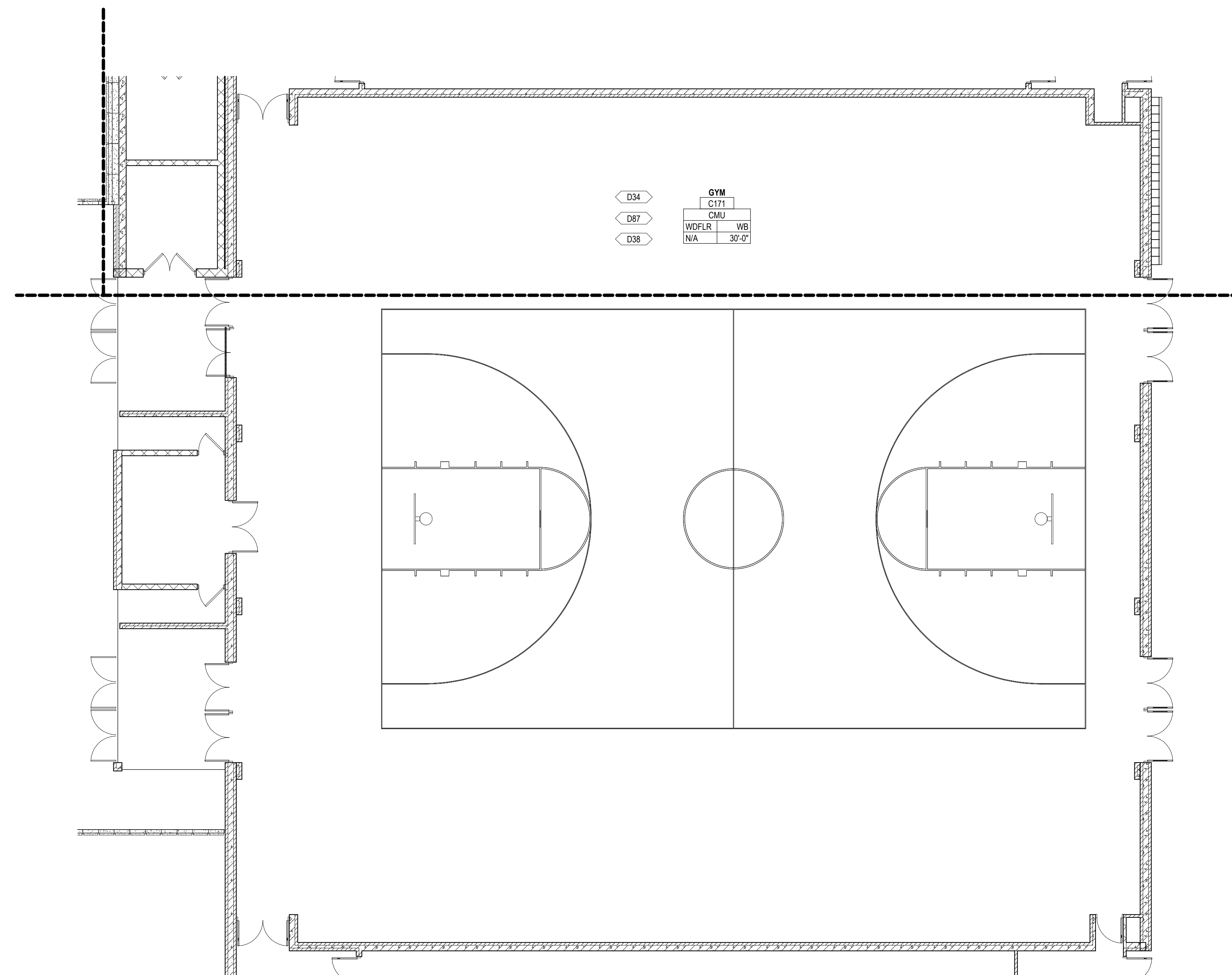
BID SET 02/05/2025



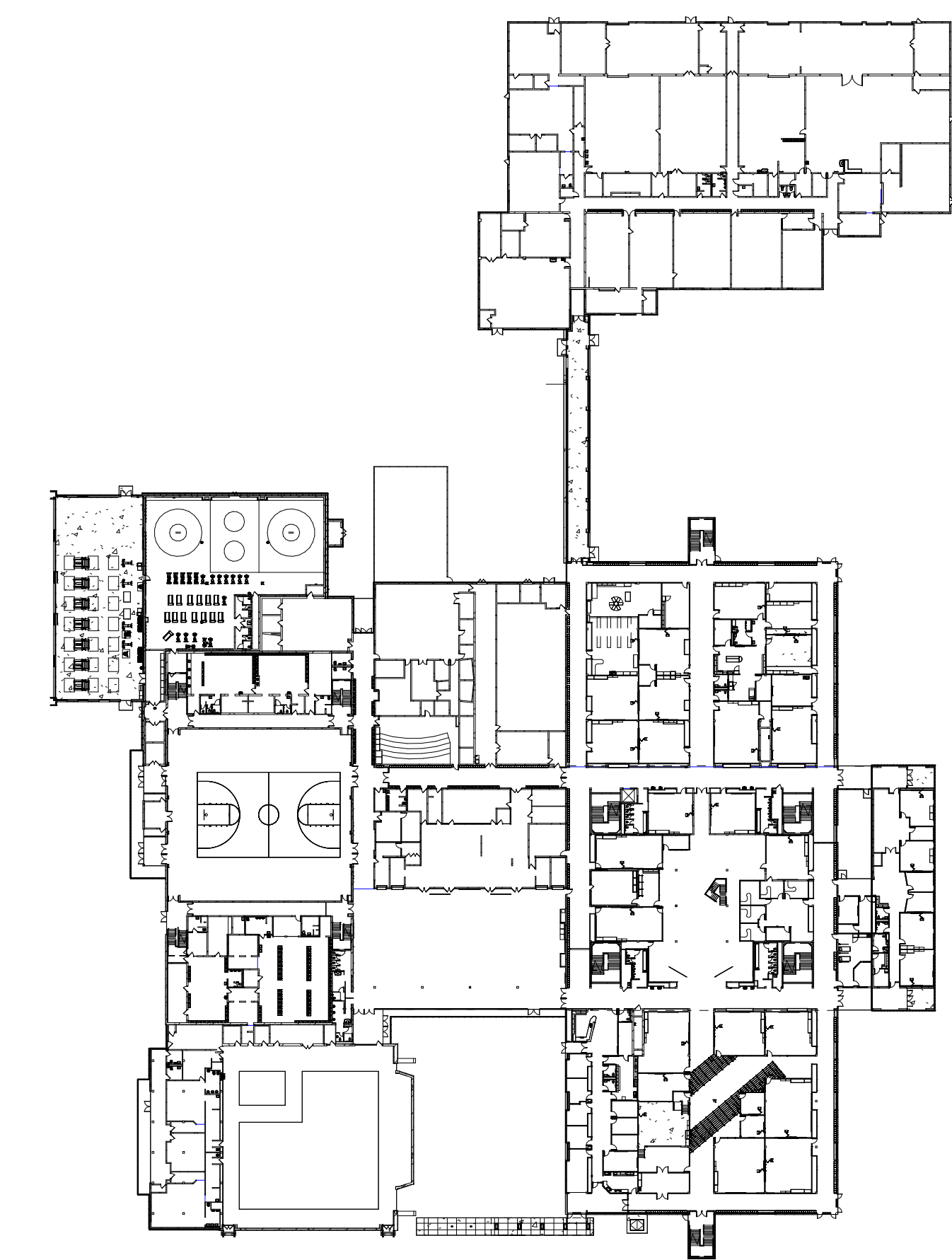
DRAWING INDEX	
GENERAL INFORMATION	G0.0 COVER SHEET
ARCHITECTURAL	A9.1 FIRST FLOOR FINISH PLAN - GYM

GENERAL DEMOLITION NOTES	
EXISTING ROOM TAG LEGEND:	
EXISTING ROOM NAME [EX. RM #]	EXISTING WALL MATERIAL
EXISTING FLOOR FINISH	EXISTING WALL BASE TYPE
EXISTING CEILING TYPE	EXISTING CEILING HEIGHT
1.	OWNER IS RESPONSIBLE FOR REMOVAL OF ALL LOOSE FURNISHINGS PRIOR TO GENERAL DEMOLITION. ALL ITEMS INCLUDING DOORS, DOOR HARDWARE, CEILING TILES CONSIDERED SALVAGEABLE SHALL ALSO BE REMOVED BY THE OWNER PRIOR TO GENERAL DEMOLITION.
2.	REMOVE ALL APPLIED FINISHES AND PREPARE SUBSTRATE FOR NEW FINISHES. SEE FINISH PLANS & INTERIOR FINISH LEGEND FOR FINISHES.
3.	EXISTING CONDITIONS: EXISTING CONDITIONS SHOWN ON DRAWINGS REPRESENT CURRENT BUILDING. IT IS THE RESPONSIBILITY OF THE CONTRACTOR TO FIELD VERIFY EXISTING CONDITIONS PRIOR TO PERFORMING WORK. REPORT ANY DISCREPANCIES TO THE ARCHITECT FOR REVIEW. WORK DONE WITHOUT RESOLUTION OF DISCREPANCIES MUST BE REDONE AT THE REQUEST OF THE ARCHITECT AT NO ADDITIONAL COST TO THE CONTRACT.
4.	UNLESS NOTED OTHERWISE, PATCH ALL FLOORS, BASE, WALLS AND CEILINGS AT EXPOSED AREAS AFFECTED BY DEMOLITION REGARDLESS OF TRADE DOING THE DEMOLITION WORK. PATCH TO MATCH ADJACENT EXISTING CONSTRUCTION WHERE SPECIFIC INFORMATION IS NOT NOTED OR SCHEDULED. REFER TO FINISH PLANS.
5.	DISPOSE OF ALL BUILDING MATERIAL IN LAWFUL MANNER.
6.	SEE FLOOR PLANS, ELEVATIONS, SECTIONS AND DETAILS FOR ADDITIONAL DEMOLITION INFORMATION WHICH MAY NOT BE INDICATED ON DEMOLITION PLANS AND TO COORDINATE EXTENT OF DEMOLITION REQUIRED.
7.	REQUIRED MEANS OF EGRESS FROM THE EXISTING BUILDING SHALL BE MAINTAINED AT ALL TIMES DURING CONSTRUCTION WHEN THE BUILDING REMAINS OCCUPIED. IN THE EVENT THAT AN EXISTING MEANS OF EGRESS CANNOT BE MAINTAINED, CONTRACTOR SHALL PROVIDE AN APPROVED TEMPORARY MEANS OF EGRESS.

KEYNOTE LEGEND	
D34	REMOVE FLOOR FINISH AND WALL BASE, REMOVE ANY ADHESIVE AND PREP FOR NEW FINISH.
D38	REMOVE PORTION OF FLOOR FOR NEW VOLLEY BALL STANDARD FLOOR INSERTS. REFER TO FINISH PLAN FOR LOCATIONS.
D87	REMOVE BLEACHERS TO ACCOMMODATE NEW WORK. REINSTALL BLEACHERS ONCE NEW FLOOR IS COMPLETE.



2 FIRST FLOOR DEMOLITION PLAN - GYM
G0.0 Scale: 1/8" = 1'-0"



1 FIRST FLOOR OVERALL PLAN
G0.0 Scale: 1" = 80'-0"



Davenport
220 Emerson Place, Suite 301
Davenport, Iowa 52801
T: 563.526.6050

Milwaukee • Sheboygan • Moline
www.brayarch.com

Project Title:
**RENOVATIONS TO
BURLINGTON HIGH SCHOOL**
Burlington Community School District
421 Terrace Dr, Burlington, IA 52601

REVISIONS:

#	DATE	DESCRIPTION
---	------	-------------

Project Number:
3760

Issued For:
BID SET

02/05/2025

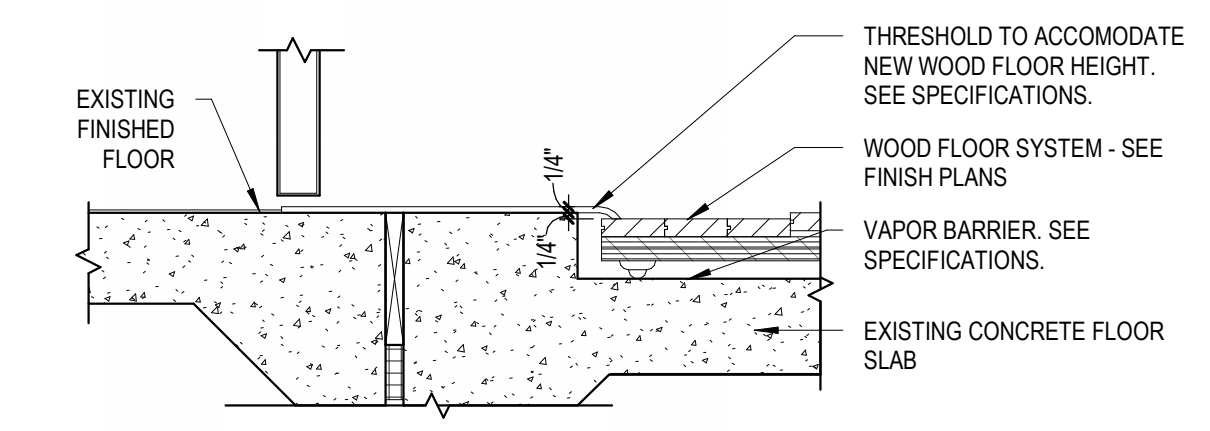
Sheet Title:
COVER SHEET

Sheet Number:

G0.0

TYPICAL ABBREVIATIONS

BLT	BORROWED LITE	FCS	FIBER CEMENT SIDING	OPH	OPPOSITE HAND
@	AT	FD	FLOOR DRAIN	OPNG	OPENING
ACC	AIR CONDITIONING	FE	FIRE EXTINGUISHER	PCONC	POLISHED CONCRETE
ACM	ACCESSIBLE	FE-36	FIRE EXTINGUISHER (AGENT 36 FOR COMPUTERS)	PLAM	PLASTIC LAMINATE
ACM	ALUMINUM COMPOSITE PANEL	FEC	FIRE EXTINGUISHER CABINET	PLAS	PLASTER
ACR	ACOUSTICAL CEILING REFLECTOR	FEP	FINISHED END PANEL	PLBG	PLUMBING
ACS FLR	ACCESS FLOOR	FES	FIBERGLASS	PLYWD	PLYWOOD
ACS PNL	ACCESS PANEL	FHP	FULL HEIGHT PARTITION	PNE	PANE
ACST	ACOUSTIC	FIN	FINISH	POL	POLISHED
ADH	ADHESIVE	FIXT	FIXTURE	PRCST	PRECAST
ADJ	ADJUSTABLE	FL	FLOOR LINE	PRFAB	PREFABRICATED
AUD	AUDITORIUM SEATING	FLSH	FLASHING	PRFINH	PREFINISH
AUX	AUXILIARY	FLG	FLOORING	PROJ	PROJECT
AV	AUDIO VISUAL	FOM	FACE OF MASONRY	PT	PAINT
AVG	AVERAGE	FOS	FACE OF STUDS	PVG	PAVING
AWF	ACOUSTICAL WALL PANEL MATERIAL	FOW	FACE OF WALL	PVMT	PAVEMENT
AWP	ACOUSTICAL WALL PANEL	FR	FIREPROOF (ING)	PWR	POWER
BEJ	BUILDING EXPANSION JOINT (EXTERIOR)	FRGL	FIRE PROTECTIVE GLAZING UNIT	QT	QUARRY TILE
BEV	BEVELED	FRFD	FIRE RATED FOLDING DOOR	OZ	QUARTZ
BITUM	BITUMINOUS	FRGL	FIBER REINFORCED GYPSUM	R	RISER
BLDG	BUILDING	FRGL	FIRE RESISTIVE GLAZING UNIT	RD	RESILIENT BASE
BLE	BRICK LEDGE ELEVATION	FRF	FIBER REINFORCED PLASTIC	RO	ROOF DRAIN
BLK	BLOCKING	FSTRN	FASTENER	REIN	REINFORCE
BM	BEAM	FTG	FOOTING	REIN	REINFORCE
BMU	BURNISHED MASONRY UNIT	GALV	GALVANIZED	REIN	REINFORCE
BOT	BOTTOM	GC	GENERAL CONTRACTOR	REIN	REINFORCE
BPC	SOUND ABSORBING BAFFLE PANELS	GCJ	GYPSUM BOARD CONTROL JOINT	REIN	REINFORCE
BRD	BRANDING ITEM	GEN	GENERAL	REIN	REINFORCE
BRG	BEARING	GF	GROUND FACE	REIN	REINFORCE
BRK	BRICK	GM CMU	GROUND FACE CMU	REIN	REINFORCE
BW	BUILDING WRAP	GFCI	GROUND FAULT CIRCUIT INTERRUPTER	REIN	REINFORCE
C&G	CURB AND GUTTER	GL	MONOLITHIC GLAZING UNIT	REIN	REINFORCE
CC	CENTER TO CENTER	GL	GLASS	REIN	REINFORCE
CAB	CABINET	GL BLK	GLASS BLOCK	REIN	REINFORCE
CBR	COUNTERTOP BRACKET	GL CMU	GLASS CMU	REIN	REINFORCE
CEM	CEMENT	GR	GRADE	REIN	REINFORCE
CEM PLAS	CEMENT PLASTER	GROM	GROMMET	REIN	REINFORCE
CFLG	COUNTER FLASHING	GT	GROUT	REIN	REINFORCE
CG	CORNER GUARD	GYP	GYPSUM	REIN	REINFORCE
CH	COAT HOOK	GYP BD	GYPSUM BOARD	REIN	REINFORCE
CIP	CAST-IN PLACE	GYP PLAS	GYPSUM PLASTER	REIN	REINFORCE
CJ	CONTROL (CONSTRUCTION) JOINT	HB	HOSE BIBB	REIN	REINFORCE
CLG	CEILING	HC	HOLLOW CORE	REIN	REINFORCE
CM	CONSTRUCTION MANAGER	HDBD	HARDBOARD	REIN	REINFORCE
CMU	CONCRETE MASONRY UNIT	HDW	HARDWARE	REIN	REINFORCE
CNR	CORNER	HDWD	HARDWOOD	REIN	REINFORCE
COL	COLUMN	HM	HOLLOW METAL	REIN	REINFORCE
CONC	CONCRETE	HO	HOLD OPEN	REIN	REINFORCE
CONT	CONTINUOUS	CBR	COUNTERTOP BRACKET	REIN	REINFORCE
CONTR	CONTRACTOR	CEM	CEMENT	REIN	REINFORCE
COORD	COORDINATE	CEM PLAS	CEMENT PLASTER	REIN	REINFORCE
CORR	CORRIDOR	CFLG	COUNTER FLASHING	REIN	REINFORCE
CPT	CARPET	CG	CORNER GUARD	REIN	REINFORCE
CS	CAST STONE	CH	COAT HOOK	REIN	REINFORCE
CSMT	CASSEMENT	CIP	CAST-IN PLACE	REIN	REINFORCE
CSWK	CASEWORK	CJ	CONTROL (CONSTRUCTION) JOINT	REIN	REINFORCE
CT	CERAMIC TILE	CLG	CEILING	REIN	REINFORCE
CTB	CERAMIC TILE BASE	CM	CONSTRUCTION MANAGER	REIN	REINFORCE
CTR	CENTER	CMU	CONCRETE MASONRY UNIT	REIN	REINFORCE
CURT	CURTAIN	CNR	CORNER	REIN	REINFORCE
CVB	COVERBOARD	COL	COLUMN	REIN	REINFORCE
DP	CABINET (DOOR/DRAWER) PULL	CONC	CONCRETE	REIN	REINFORCE
DEMO	DEMOLITION	CONT	CONTINUOUS	REIN	REINFORCE
DEPT	DEPARTMENT	CONTR	CONTRACTOR	REIN	REINFORCE
DET	DETAIL	COORD	COORDINATE	REIN	REINFORCE
DF	DRINKING FOUNTAIN (ELECTRIC WATER COOLER)	CORR	CORRIDOR	REIN	REINFORCE
DM	DIAMETER	CPT	CARPET	REIN	REINFORCE
DMPF	DAMP-PROOFING	CS	CAST STONE	REIN	REINFORCE
DN	DOWN	CSMT	CASSEMENT	REIN	REINFORCE
DPR	DIGITAL PRINT	CSWK	CASEWORK	REIN	REINFORCE
DPTN	DEMOUNTABLE PARTITION	CT	CERAMIC TILE	REIN	REINFORCE
DR	DOOR	CTB	CERAMIC TILE BASE	REIN	REINFORCE
DRLG	DECORATIVE RAILING / GUARDRAIL	CTR	CENTER	REIN	REINFORCE
DS	DOWNSPOUT	CURT	CURTAIN	REIN	REINFORCE
DTS	DATE STONE	CVB	COVERBOARD	REIN	REINFORCE
DWG	DRAWING	DP	CABINET (DOOR/DRAWER) PULL	REIN	REINFORCE
DWR	DRAWER	DEMO	DEMOLITION	REIN	REINFORCE
E	EAST	DEPT	DEPARTMENT	REIN	REINFORCE
EFS	EXTERIOR FINISH SYSTEM	DET	DETAIL	REIN	REINFORCE
EFS	EXTERIOR INSULATION FINISH SYSTEM	DF	DRINKING FOUNTAIN (ELECTRIC WATER COOLER)	REIN	REINFORCE
EJ	EXPANSION JOINT (INTERIOR)	DM	DIAMETER	REIN	REINFORCE
EL	ELEVATION	DMPF	DAMP-PROOFING	REIN	REINFORCE
ELEC	ELECTRICAL	DN	DOWN	REIN	REINFORCE
ELEV	ELEVATOR	DPR	DIGITAL PRINT	REIN	REINFORCE
ENTR	ENTRANCE	DPTN	DEMOUNTABLE PARTITION	REIN	REINFORCE
EPS	EXPANDED POLYSTYRENE BOARD (INSULATION)	DR	DOOR	REIN	REINFORCE
EPT	EPOXY PAINT	DRLG	DECORATIVE RAILING / GUARDRAIL	REIN	REINFORCE
EQ	EQUAL	DS	DOWNSPOUT	REIN	REINFORCE
EW	EACH WAY	DTS	DATE STONE	REIN	REINFORCE
EW	ELECTRIC WATER COOLER (DRINKING FOUNTAIN)	DWG	DRAWING	REIN	REINFORCE
EXH	EXHAUST	DWR	DRAWER	REIN	REINFORCE
EXP	EXPOSED	E	EAST	REIN	REINFORCE
EXST	EXISTING	EFS	EXTERIOR FINISH SYSTEM	REIN	REINFORCE
EXT	EXTERIOR	EFS	EXTERIOR INSULATION FINISH SYSTEM	REIN	REINFORCE
FBI	FURNISH & INSTALL	EJ	EXPANSION JOINT (INTERIOR)	REIN	REINFORCE
FAB	FABRIC	EL	ELEVATION	REIN	REINFORCE
FB	FACE BRICK	ELEC	ELECTRICAL	REIN	REINFORCE
FCO	FLOOR CLEANOUT	ELEV	ELEVATOR	REIN	REINFORCE
		ENTR	ENTRANCE	REIN	REINFORCE
		EPS	EXPANDED POLYSTYRENE BOARD (INSULATION)	REIN	REINFORCE
		EPT	EPOXY PAINT	REIN	REINFORCE
		EQ	EQUAL	REIN	REINFORCE
		EW	EACH WAY	REIN	REINFORCE
		EW	ELECTRIC WATER COOLER (DRINKING FOUNTAIN)	REIN	REINFORCE
		EXH	EXHAUST	REIN	REINFORCE
		EXP	EXPOSED	REIN	REINFORCE
		EXST	EXISTING	REIN	REINFORCE
		EXT	EXTERIOR	REIN	REINFORCE
		FBI	FURNISH & INSTALL	REIN	REINFORCE
		FAB	FABRIC	REIN	REINFORCE
		FB	FACE BRICK	REIN	REINFORCE
		FCO	FLOOR CLEANOUT	REIN	REINFORCE



3 DOOR THRESHOLD @ WOOD FLOOR
Scale: 1/2" = 1'-0"

INTERIOR FINISH LEGEND

TAG	MATERIAL	MATERIAL...	MATERIAL SPECIFICATION	MATERIAL SIZE	MATERIAL NOTES
ETR	EXISTING TO REMAIN				
PT-1	PAINT		BONA SPORT GAME LINE PAINT, SUPER SPORT PAINT BASE COLORS COLOR: PURPLE		GYM FLOOR LINES
PT-2	PAINT		BONA SPORT GAME LINE PAINT, SUPER SPORT PAINT BASE COLORS COLOR: WHITE		GYM FLOOR LINES
PT-3	PAINT		BONA SPORT GAME LINE PAINT, SUPER SPORT PAINT BASE COLORS COLOR: GREY		GYM FLOOR LINES
PT-4	PAINT		BONA SPORT GAME LINE PAINT, SUPER SPORT PAINT BASE COLORS COLOR: DARK GREY		GYM FLOOR LINES
WB-2	RESILIENT WALL BASE - VENTED	TARKETT	STYLE: VENT COVE COLOR: BLACK VCO 40 400740007	4"	
WDFIN-1	WOOD FINISH	SEE PROJECT MANUAL SECTION 09 64 00	COLOR: CLEAR		MAIN GYM FLOOR
WDFIN-2	WOOD FINISH	SEE PROJECT MANUAL SECTION 09 64 00	COLOR: STAIN TO BE SELECTED BY OWNER AND ARCHITECT		GYM FLOOR ACCENT
WDFIN-3	WOOD FINISH	SEE PROJECT MANUAL SECTION 09 64 00	COLOR: STAIN TO MATCH SCHOOL BRANDING PURPLE, SELECTED BY OWNER AND ARCHITECT		GYM FLOOR ACCENT
WDFIN-4	WOOD FINISH	SEE PROJECT MANUAL SECTION 09 64 00	COLOR: STAIN TO MATCH SCHOOL BRANDING GREY, SELECTED BY OWNER AND ARCHITECT		GYM FLOOR ACCENT
WDFLR-1	WOOD FLOOR	SEE PROJECT MANUAL SECTION 09 64 00	FINISHES: WDFIN-1, -2, -3, -4		GYM. SEE FINISH PLAN FOR FINISH DESIGNATIONS

GENERAL FINISH NOTES

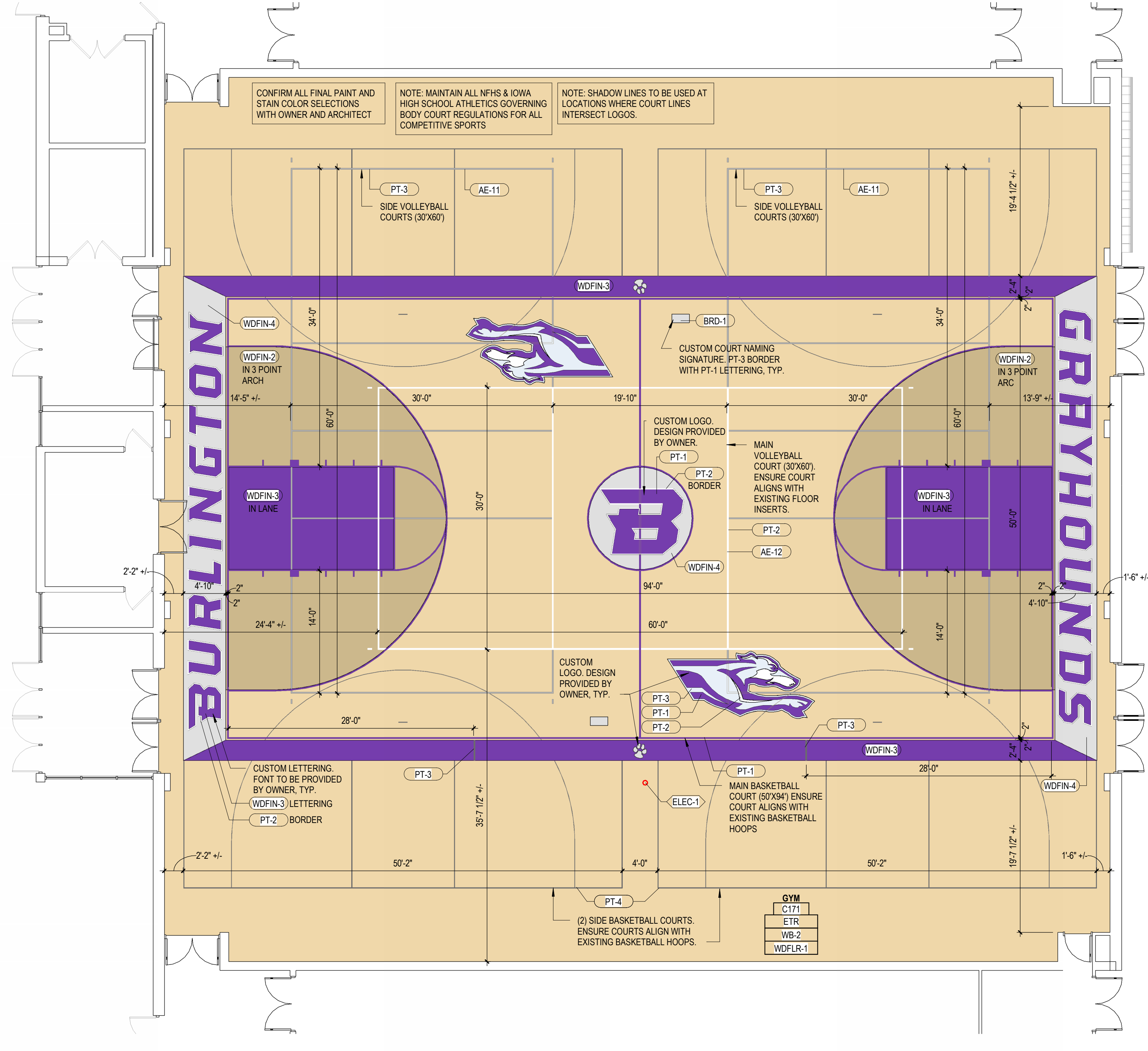
FINISH PLAN LEGEND

FINISH PLAN GENERAL NOTES:

- SEE INTERIOR FINISH LEGEND FOR ALL FINISH KEYNOTES (FINISH TAGS)
- INTERIOR FINISHES AS DEFINED BY THE 2021 INTERNATIONAL BUILDING CODE - ARE TO BE IN ACCORDANCE WITH THE CODE REQUIREMENTS SET FORTH IN CHAPTER 8 OF THE 2021 IBC AS WELL AS ALL OTHER STATE/LOCAL CODE REQUIREMENTS.
- FOLLOW MANUFACTURER'S WRITTEN INSTALLATION GUIDELINES FOR ALL FINISHES/MATERIALS.
- REFERENCE FINISH PLANS FOR LOCATIONS OF ALL MATERIALS.
- FLOORING TRANSITIONS TO OCCUR AT CENTERLINE OF DOOR UNLESS NOTED OTHERWISE.
- PROVIDE TRANSITION STRIPS AT CHANGES IN FLOORING.
- SEE DETAILS AND SPECIFICATIONS FOR FLOORING TRANSITION TYPES.
- ROOM FINISH TAG IS SHOWN ABOVE. ALL ROOMS TO RECEIVE ANY NEW FINISHES SHOW A ROOM FINISH TAG. ROOMS WITH NO NEW FINISHES SHOW ROOM NAME AND NUMBER ONLY.

KEYNOTE LEGEND

AE-11	PROVIDE NEW VOLLEY BALL STANDARD FLOOR INSERTS WITH COVER AT SIDE COURTS
AE-12	REPLACE EXISTING VOLLEY BALL STANDARD COVER PLATES AT MAIN COURT
BRD-1	CONTRACTOR TO TRACE, STENCIL, OR DIGITALLY RECORD SIGNATURE ON EXISTING COURT TO REPLICATE IN THIS LOCATION
ELEC-1	EXISTING FLOOR BOX TO REMAIN. CONTRACTOR TO PROVIDE NEW COVER PLATE
PT-1	GYM MARKINGS PAINT - BASKETBALL MAIN COURT 2" THICK. SEE INTERIOR FINISH LEGEND
PT-2	GYM MARKINGS PAINT - VOLLEYBALL MAIN COURT 2" THICK. SEE INTERIOR FINISH LEGEND
PT-3	GYM MARKINGS PAINT - VOLLEYBALL SIDE COURT 2" THICK. SEE INTERIOR FINISH LEGEND
PT-4	GYM MARKINGS PAINT - BASKETBALL SIDE COURT 1" AND 1/2" THICK. SEE INTERIOR FINISH LEGEND
WDFIN-2	WOOD FINISH - SEE INTERIOR FINISH LEGEND
WDFIN-3	WOOD FINISH - SEE INTERIOR FINISH LEGEND
WDFIN-4	WOOD FINISH - SEE INTERIOR FINISH LEGEND



1 FIRST FLOOR FINISH PLAN - GYM
Scale: 1/8" = 1'-0"



Davenport
220 Emerson Plaza, Suite 301
Davenport, Iowa 52801
T: 563.526.6050

Milwaukee • Sheboygan • Moline

www.brayarch.com

Project Title:
RENOVATIONS TO BURLINGTON HIGH SCHOOL
Burlington Community School District
421 Terrace Dr, Burlington, IA 52601

REVISIONS:

#	DATE	DESCRIPTION

Project Number:
3760

Issued For:
BID SET

02/05/2025

Sheet Title:
FIRST FLOOR FINISH PLAN - GYM

Sheet Number:
A9.1